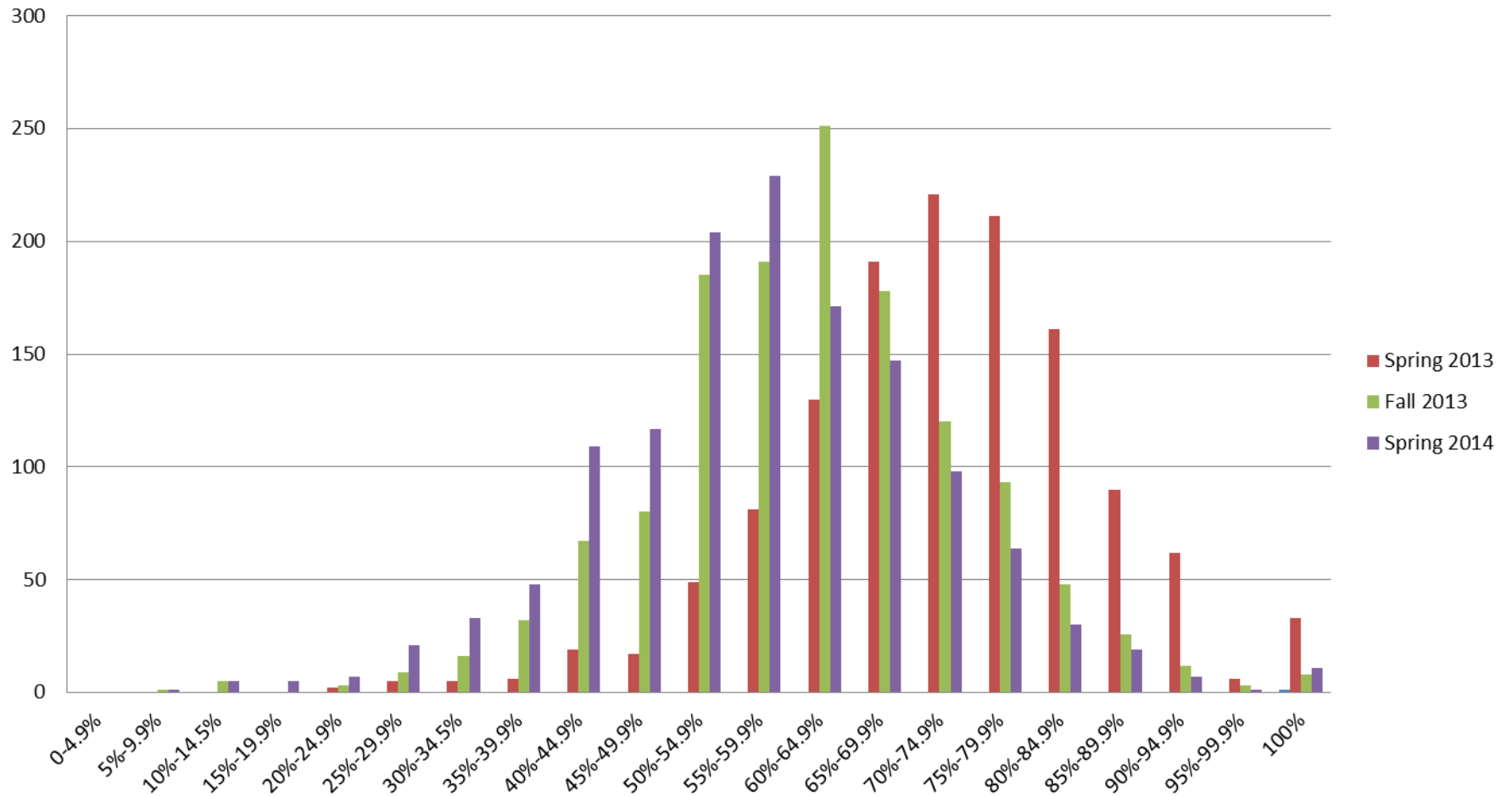


Count Of Sections within Response Rate Range



Evaluation Procedures and Response Comparison

Criteria	Spring 2013	Fall 2013		Spring 2014		
			Change from Spring		Change from Fall	Change from Spring
Evaluation Window	Three Weeks	Two Weeks	- One Week	Two Weeks	No Change	- One Week
Reminder Frequency	Every Other Day	Every 3 Days	Less frequent	Every 3 Days	No Change	Less frequent
Total Student Emails	10	5	-5	5	No Change	-5
Fac Notifications on Response Rates	1	1	No Change	1	No Change	No Change
Fac Notifications on Response Rates Criteria	Under 70% Response	Under 60% Response	Lower Criteria	Under 60% Response	No Change	Lower Criteria
Number Sections	1332	1335	3	1333	-2	1
Tot Evals	38,223	40,693	2,470	38,467	-2,226	244
University-Wide Publicity	<i>Lumberjack</i> Ad	--	Less	--	No Change	Less
	University Notices	University Notices	No Change	University Notices	No Change	No Change
	Email to Students from "HSU"	--	Less	--	No Change	Less
	Email to Faculty from Provost	--	Less	--	No Change	Less
	--	Email to Faculty from FAC Chair	More	--	Less	No Change
	Coord Mtg Announcements	Coord Mtg Announcements	No Change	Coord Mtg Announcements	No Change	No Change
	humboldt.edu/cebs/website	humboldt.edu/cebs/website	No Change	humboldt.edu/cebs/website	No Change	No Change
	College Newsletters	College Newsletters	No Change	College Newsletters	No Change	No Change

Week One Descriptive Statistics

Total Responses	17,495	15,477	-2,018	14,930	-547	-2,565
Overall Response Rate	45.77%	38.03%	-7.74%	38.81%	0.78%	-6.96%
Number Sections with Responses	1290	1320	30	1320	0	30
Percentage of Sections with Responses	96.85%	98.88%	2.03%	99.02%	0.15%	2.18%
Sections' Mean Response Rate	45.87%	38.05%	-7.82%	38.63%	0.58%	-7.24%

Final Descriptive Statistics

Total Evaluations Sent	38,223	40,693	2,470	38,467	-2,226	244
Total Responses	27,602	24,749	-2,853	21,856	-2,893	-5,746
Overall Response Rate	72.21%	60.82%	-11.39%	56.82%	-4.00%	-15.40%
Number of Sections with Responses	1290	1328	38	1325	-3	35
Percentage of Sections with Responses	96.85%	99.48%	2.63%	99.40%	-0.08%	2.55%
Sections' Mean Response Rate	72.13%	60.77%	-11.36%	56.82%	-3.95%	-15.31%
Percentage of Sections with Response Rates 50%+	95.81%	83.96%	-11.85%	73.93%	-10.03%	-21.88%
Percentage of Sections with Response Rates 60%+	85.73%	55.65%	-30.08%	41.30%	-14.35%	-44.43%
Percentage of Sections with Response Rates 70%+	60.82%	23.34%	-37.48%	17.33%	-6.01%	-43.49%
Percentage of Sections with Response Rates 80%+	27.31%	7.30%	-20.01%	5.12%	-2.18%	-22.19%
Percentage of Sections with Response Rates 90%+	7.84%	1.73%	-6.11%	1.43%	-0.30%	-6.41%